

# RIVERSIDE COUNTY LEADING THE WAY TO COLLEGE AND CAREER READINESS



# LEADERSHIP MATTERS

## FOCUS ON THE RIGHT WORK!

### College and Career Readiness Goals:



Increase the percentage of students applying to three or more colleges to 60%



Increase the percentage of FAFSA/Dream Act completions from 52% to 93%

Increase the percentage of students enrolling in post-secondary education from 52% to 65%



Increase the numbers of students who are college ready using several indicators such as A-G completion, AP enrollment, Early Assessment Placement (EAP) conditional/ready and community college multiple measures/course placement



# LEARN BY DOING

## Riverside County Education Collaborative (RCEC)

- Effective leaders are action oriented!
- Build capacity of those doing the work – there is no silver bullet or magic program
- Commitment to continuous improvement – results oriented



Chasing improvement in critical metrics

- FAFSA completion
- A-G completion (LCAP)
- College Going Rate (LCAP)
- AP enrollment (LCAP)
- AP pass (LCAP)
- Cohort Graduation (LCAP)
- EAP College Conditional/Ready for ELA & Math (LCAP)

# RACE TO SUBMIT

- Challenge to increase FAFSA/Dream
- Act submission rates to help make higher education accessible
- Recognition and banners awarded to site school counseling departments
- County wide training provided for over 500 school counselors, registrars, and administrators



OFFICIAL COMMERCIAL



# RACE TO SUBMIT ACHIEVEMENTS

**20,668**

FAFSA or Dream Act applications  
have been submitted as of  
June 21, 2016

**10**

RCEC schools are  
in top 25 list

**2016**

**2015**

**19,260**

FAFSA/DREAM ACT  
applications submitted

**1,073**

Additional  
CAL GRANT Awarded

**\$2,590 - \$4,035,264**

Additional Money Gained

**15,150**

FAFSA/DREAM ACT  
applications submitted

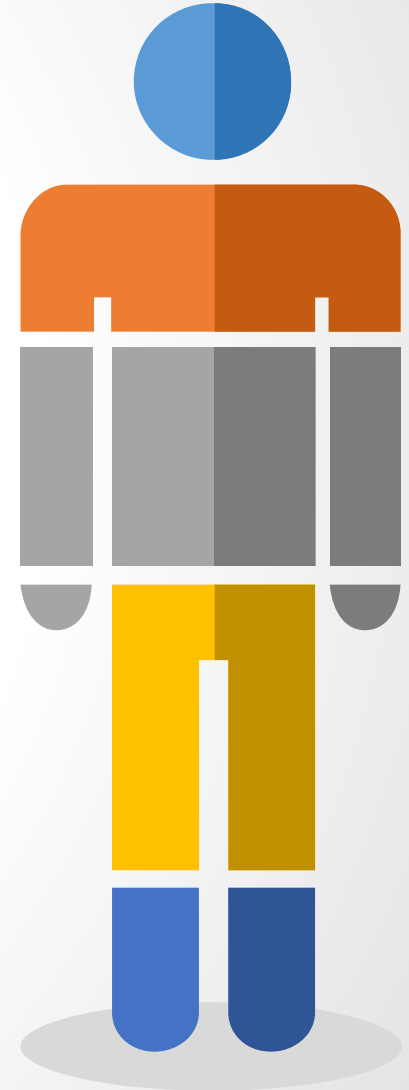
**2014**



# — RACE TO RIGOR A-G TRANSCRIPT ANALYSIS —

## GOALS AND BENEFITS:

- ◉ Calibrates a site/district team's understanding of A-G
- ◉ Accurate analysis of A-G completion rates
- ◉ Identify obstacles – access & success
- ◉ Identify actions that may be implemented to increase A-G completion rates
- ◉ Allows you to reexamine cultural and procedural barriers that might be working against your organization

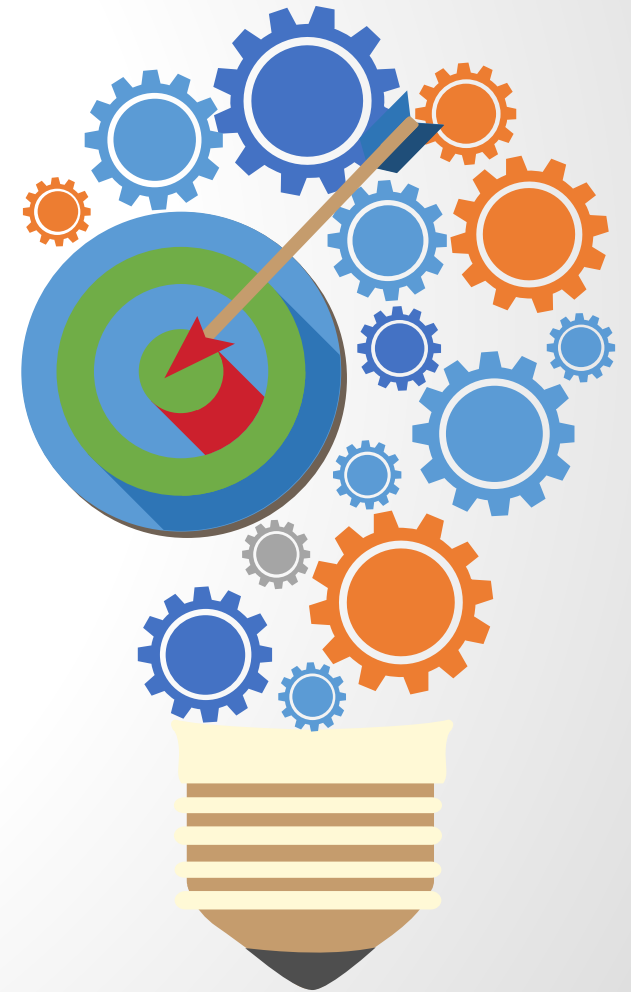


# SCHOOL COUNSELING LEADERSHIP NETWORK

## INTERESTING FACT

The Pupil Personnel Services (PPS) credential that counselors obtain has 16 standards but does not include college planning.

- Our goal as school counselors is for students to be successful in completing a rigorous course of study in pursuit of a seamless transition to postsecondary education
- Provide opportunities to collaborate and share best practices to create a high performing culture, promoting college and career readiness
- All sessions and activities have a college and career focus
- Over 400 school counselors county wide have attended these two yearly network meetings



# 2<sup>nd</sup> ANNUAL COLLEGE KICKOFF 2016-2017

- Provide College and FAFSA/Dream Act application workshops for seniors during the school day
- Encourage PSAT and SAT testing for students during the school day
- Explore college and career plans with students and review necessary coursework for college admission
- Opportunity to Impact

Scope of influence has increased to include the following districts:

BEAUMONT

HEMET

PALO VERDE

PALM SPRINGS

PERRIS-UNION

MORENO VALLEY

MURRIETA VALLEY

TEMECULA VALLEY

VAL VERDE

**15,528 Seniors**

(44% of Riverside County senior class)

**63,803**

9<sup>th</sup>-12<sup>th</sup> grade students  
(50% of Riverside County 9<sup>th</sup>-12<sup>th</sup> grade)





## OTHER RCEC INITIATIVES

### Race To Rigor

increase student's access and success in rigorous coursework including A-G, Advanced Placement (AP), Dual Enrollment, and International Baccalaureate (IB) to ensure preparation and academic success in college



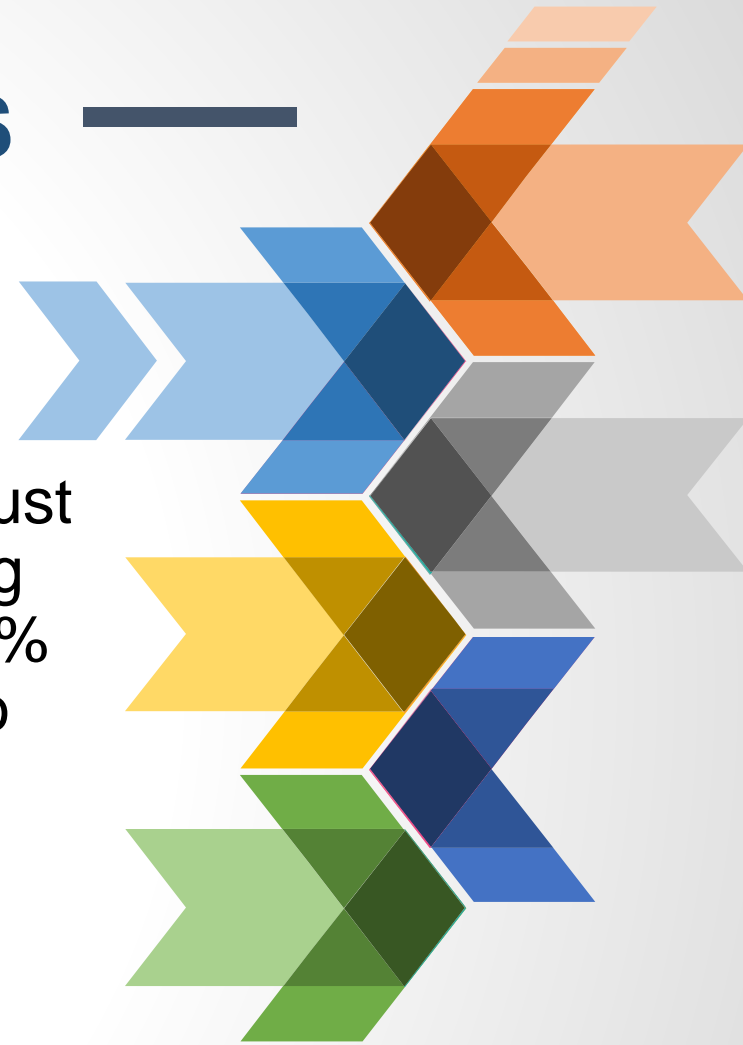
[AP READINESS VIDEO](#)

### Race To Ready

using multiple measures for course placement – i.e. high school transcript, GPA – not just Accuplacer cut score - helping to move approximately 25-30% of students from remedial into credit bearing coursework

### College Signing Day

Schoolwide celebration for students who have committed to a post secondary plan



# FOR MORE INFORMATION ON OUR INITIATIVES PLEASE VISIT US @

## [www.rcec.us](http://www.rcec.us)

