

# *Affordability as a Barrier to Access and Success at California's Public Colleges and Universities*

---

**Presentation of Debbie Cochrane,  
The Institute for College Access & Success**

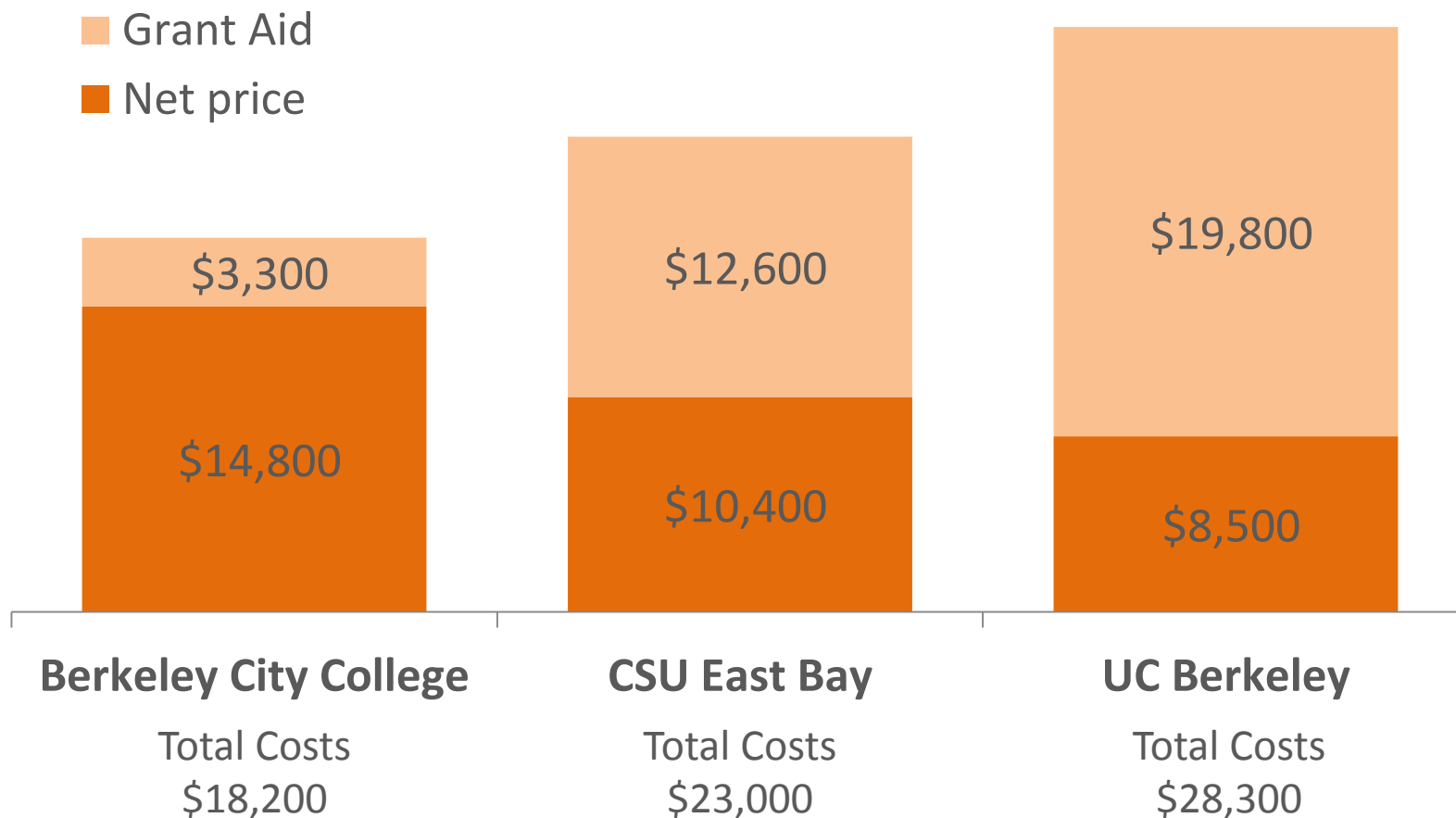
California Assembly Higher Education  
Committee Oversight Hearing

October 7, 2013

Loma Pelona Center  
University of California, Santa Barbara

the institute for  
**college  
access & success**

# Net Price vs. Sticker Price at Three Public California Institutions



# Compared to Other State Grant Programs, Cal Grants Are:



- > #1 in total dollars provided
- > #5 in number of students served
- > #16 in dollars provided per full-time equivalent student

# The Maximum Cal Grant Covers 8% - 43% of Total College Costs, Depending on College Type

2012-13 Costs and Cal Grants	Berkeley City College	CSU East Bay	UC Berkeley
Tuition and Systemwide Fees	\$1,104	\$5,472	\$12,192
Total College Costs	\$17,889	\$24,771	\$28,492
Maximum 1st-Year Cal Grant	\$1,473	\$5,472	\$12,192

Share of Total Costs Covered by Maximum 1st-Year Cal Grant

8%

22%

43%

# Very Few of the Lowest-Income Aid Applicants in California Receive a Cal Grant

**23%** In California, 23% of very low-income students who apply for aid receive a Cal Grant.

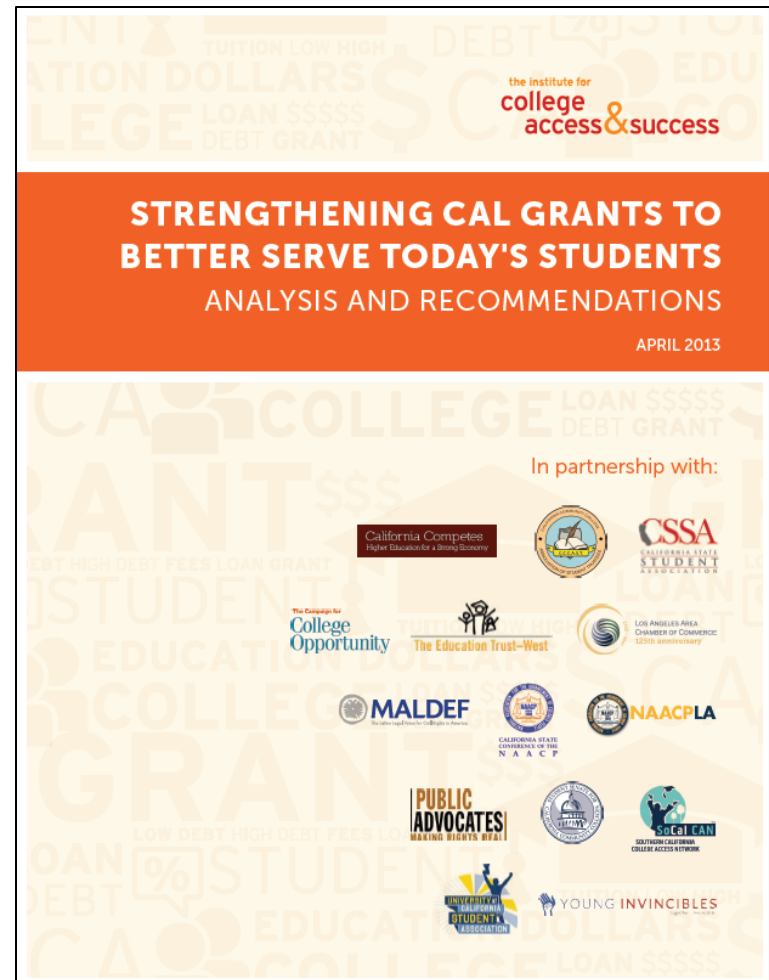
Of very low-income students:

**77%** UC students are the **most** likely to receive a Cal Grant.

**16%** CCC students are the **least** likely to receive a Cal Grant.

# Recommendations to Strengthen Cal Grants

1. **Increase the Cal Grant B Access Award**, which helps low-income recipients limit their work hours and focus on their studies.
2. **Serve more Cal Grant-eligible students.**
3. **Include tuition awards for first-year Cal Grant B recipients**, to enable low-income students to choose the college that is right for them.



# Recommendations to Target Available Middle Class Scholarship (MCS) Resources

## 1. Prioritize applicants with the greatest need:

- Limit scholarship funds to covering students' unmet financial need, as defined under federal needs analysis.
- Adjust the sliding scale to provide larger subsidies to Californians at or below California median household income.

## 2. Level the playing field between middle- and low-income aid recipients:

- Limit years of MCS eligibility to the same number as for Cal Grants.

## 3. Include community college students:

- Community college students face substantial affordability challenges and are most likely to be underserved by the Cal Grant program.
- MCS legislation considered in 2012 included support for community college students, but the MCS program created in 2013 did not.